

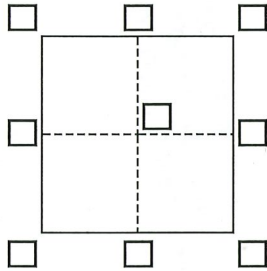
CORNER RECORD

Agency Index CR22-041

Document Number 011-252-04 (ADJ)

City of SAN RAFAEL County of MARIN, California

Brief Legal Description MONUMENT LOCATED WITHIN THIRD STREET AT 821 D STREET



CORNER TYPE

Government Corner Control
 Meander Property
 Rancho Other

Date of Survey January - February 2022

COORDINATES (Optional)

N. _____ E. _____

Elevation _____

Units Metric U.S. Survey Foot

Horizontal Datum _____

Zone _____ Epoch Date _____

Vertical Datum _____

Complies with Public Resources Code §§8801-8819

Complies with Public Resources Code §§8890-8902

PLS Act Ref.: 8765(d) 8771 8773 Other:

Corner/Monument: Left as found Established Rebuilt Pre-Construction

Found and tagged Reestablished Referenced Post-Construction

Narrative of corner identified and monument as found, set, reset, replaced, or removed:

See sheet #2 for description(s):

FOUND NAIL AND TAG, SET IN GUTTER, WITHIN THIRD STREET AT 821 D STREET, LABELED LS 5944, PER 2015 M 87.

SET REFERENCE POINTS IN CONCRETE AS SHOWN ON PAGE 2 TO PRESERVE MONUMENT LOCATION.

SURVEYOR'S STATEMENT

This Corner Record was prepared by me or under my direction in conformance with

the Professional Land Surveyors' Act on May 10, 2022

Signed [Signature] P.L.S. or R.C.E. No. 9387



COUNTY SURVEYOR'S STATEMENT

This Corner Record was received 8/4/22

and examined and filed 9/14/22

Signed T. W. Park P.L.S. or R.C.E. No. 8176

Title County Surveyor

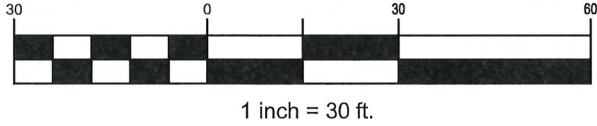
County Surveyor's Comment



DOC# 011-252-04 (ADJ)
 AGENCY INDEX: CR22-041



Graphic Scale (in feet)

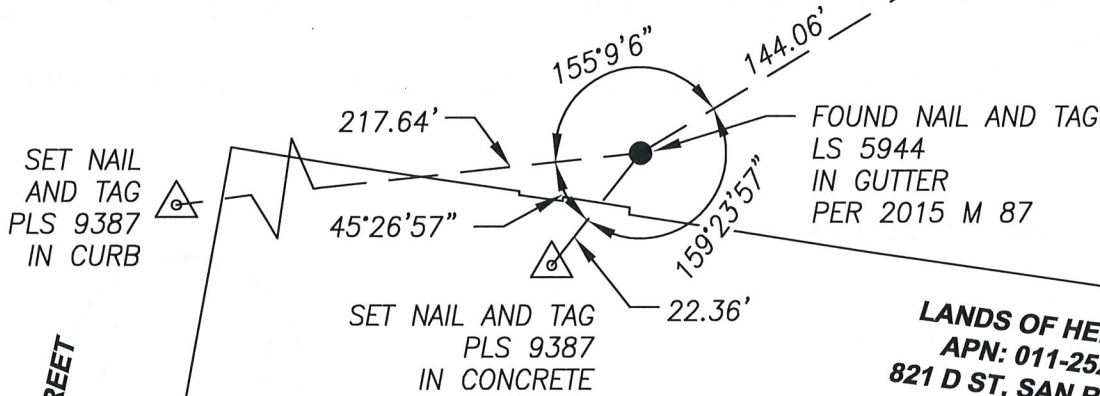


LANDS OF BENITEZ, JONES AND ANNE
 APN: 011-251-09
 1410 3RD ST, SAN RAFAEL, CA 94901

LANDS OF GRATIOTS
 APN: 011-251-07
 905 D ST, SAN RAFAEL, CA 94901

SET NAIL
 AND TAG
 PLS 9387
 IN CURB

3RD STREET
 (WESTBOUND - ONE WAY
 DIRECTION)



LANDS OF HEISERS
 APN: 011-252-04
 821 D ST, SAN RAFAEL,
 CA 94901

LEGEND



△ TIE TO PRE-CONSTRUCTION REFERENCE POINT
 SET REFERENCE POINT, NAIL AND TAG PLS 9387
 ● FOUND MONUMENT AS NOTED

CSW | ST2

CSW/Stuber-Stroeh Engineering Group, Inc.

Civil & Structural Engineers | Surveying & Mapping | Environmental Planning
 Land Planning | Construction Management

45 Leveroni Court
 Novato, CA 94949

tel: 415.883.9850
 fax: 415.883.9835

<http://www.cswst2.com>

© 2019

Rev. -

Date: 05/10/22

Job No. 1920101.50

Scale: 1" = 30'

**MONUMENT PRESERVATION
 CORNER RECORD**

MONUMENT LOCATED WITHIN 3RD STREET AT 821 D STREET

SAN RAFAEL

MARIN

CALIFORNIA